

## Middle Georgia Plaza

Property Report (Middle Georgia Plaza)



Property Details	
Site/Building Name	Middle Georgia Plaza
Street Address	140 W Dykes St
City	Cochran
County	Bleckley County
Zip Code	31014
Type of space	Retail
Min Size	1,500 sf
Max Size	7,680 sf
Last Updated	7/28/2017

Contact Information	
Company	Georgia Electric Membership Corporation
Contact Name	Ricky McGee
Address	75 5th Street, Suite 710
City	Atlanta
State	Georgia
Phone	(404) 521-7620
Email	<a href="mailto:ricky.mcgee@georgiaemc.com">ricky.mcgee@georgiaemc.com</a>
Website	<a href="http://www.georgiaemc.com">www.georgiaemc.com</a>

Contact Information	
Company	Bleckley-Cochran Industrial Development Authority/Cochran-Bleckley Chamber of Commerce Sec./Treas.
Contact Name	Nicole Ward
Address	102 N Second Street, Suite A
City	Cochran
State	Georgia
Phone	(478) 934-2965
Cell	(478) 290-1489
Email	<a href="mailto:nward@cochran-bleckleyidachamber.com">nward@cochran-bleckleyidachamber.com</a>
Website	<a href="http://www.cochran-bleckleychamber.org">http://www.cochran-bleckleychamber.org</a>

Availability	
For Lease	Yes
Lease Rate	\$.00/sf

Building Details	
Total Building sf	42,458 sf
Ceiling Height Min	ft
Office sf	sf
Year Built	1992

Site Details	
Current Use	Anchored Strip Center
Total Acres	13.11 acres
Industrial Park Name	Middle Georgia Plaza
Development Stage	Active

Incentives	
Less Developed Census Tracts	Yes

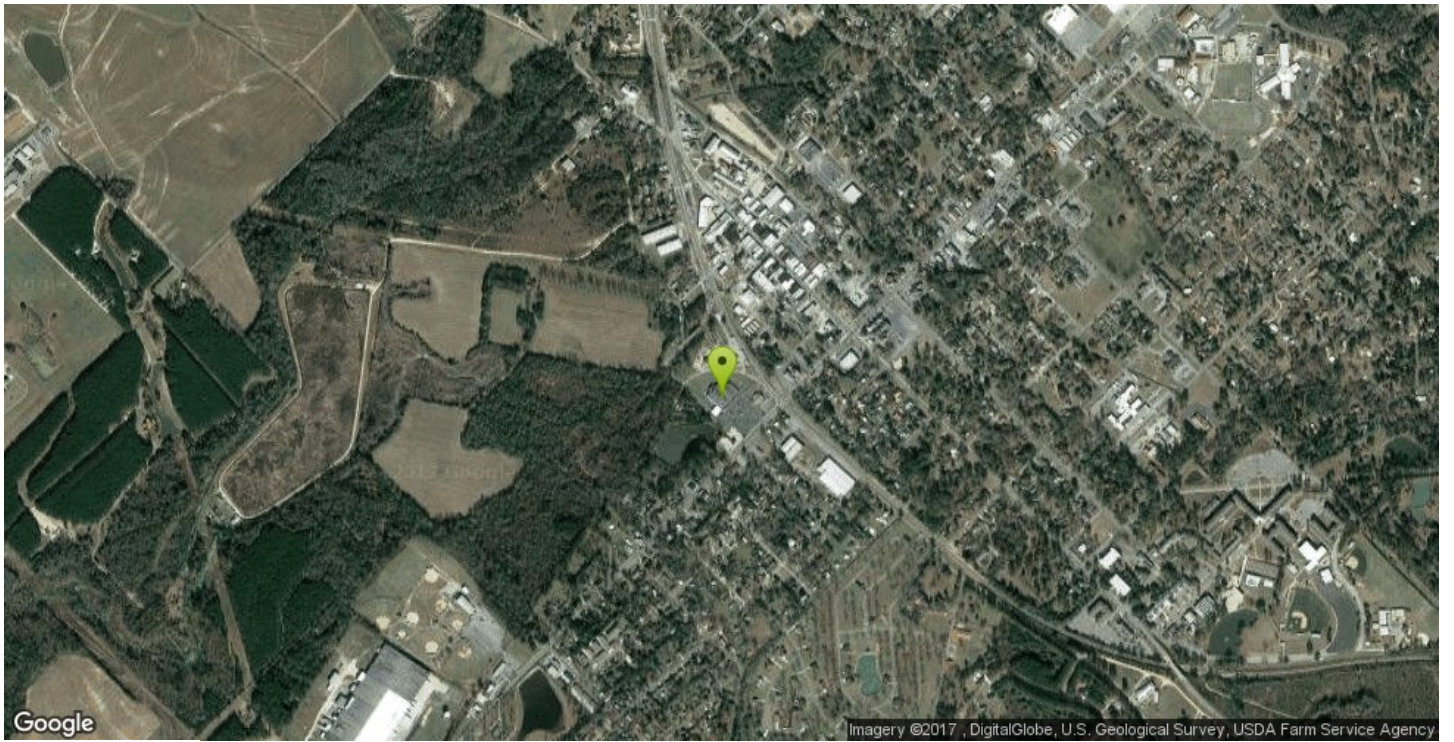
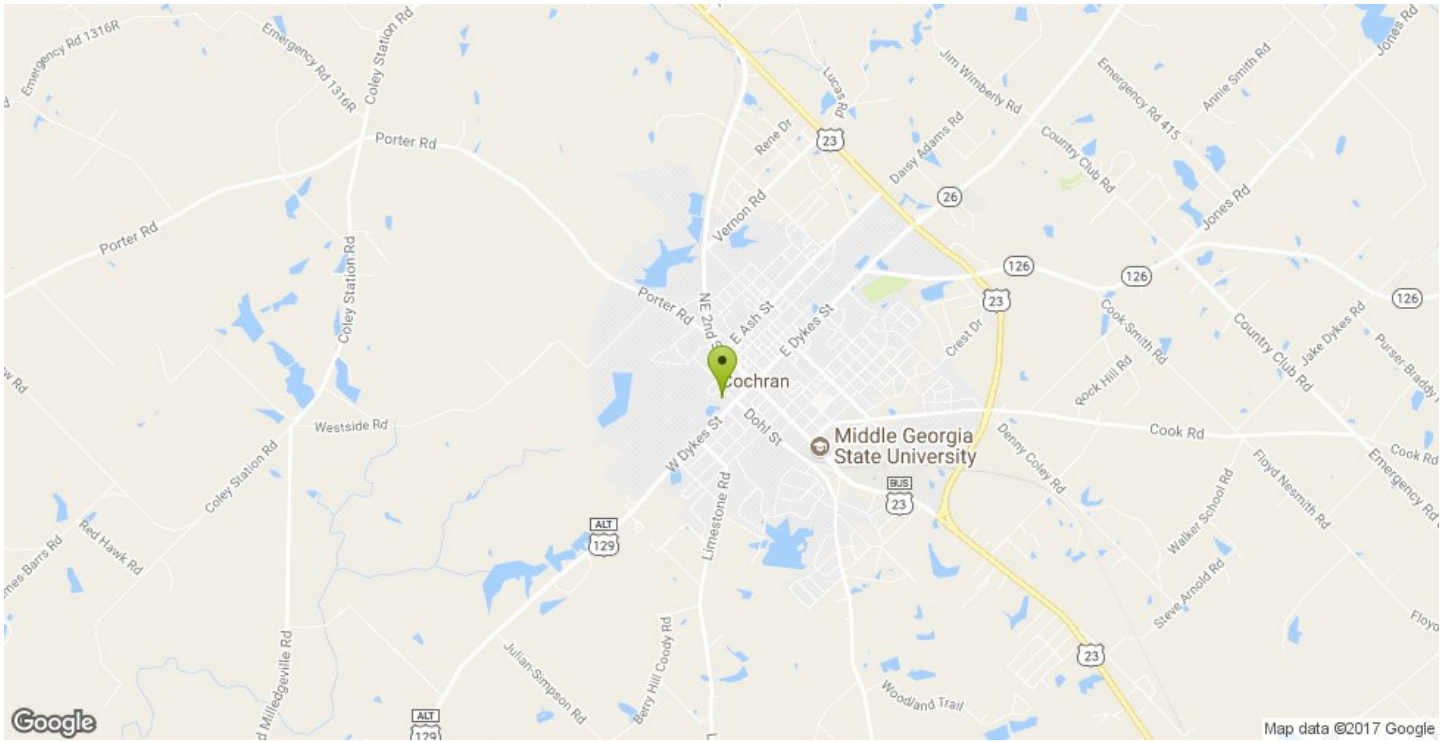
Primary Contact	
Company	Stafford Properties
Name	Curt Scott
Phone	(404) 214-9934
Email	<a href="mailto:curtscott@staffordprop.com">curtscott@staffordprop.com</a>
Address	3050 Peachtree Road NW, Suite 540
City	Atlanta

Description	
Middle Georgia Plaza is located on Dykes Street, in close proximity to the town square and Middle Georgia College. Cochran is also the county seat for Bleckley County. Anchor Tenant Harveys.	

Attachments	
<a href="#">Site Plan</a> <a href="#">Brochure</a>	



140 W Dykes St



140 W Dykes St



