

Guide to Fishing Ocmulgee Public Fishing Area



"takemefishing"



Nestled within the boundaries of Ocmulgee Wildlife Management Area in Bleckley County, Ocmulgee PFA offers a 106-acre lake for your fishing enjoyment. The lake can be fished from the bank or by boat and is fertilized and intensively managed to maximize fishing success. Due to its unique location and close proximity to the Ocmulgee River, this area offers many opportunities for the outdoor enthusiast. Visit Ocmulgee PFA for a peaceful fishing or outdoor experience with friends and family.

Facilities

- Concrete boat ramp
- Restrooms
- Some facilities accessible to persons with disabilities
- Fishing piers
- Picnic tables
- Fish cleaning station

✓ Trip Check List

- Check the current boating regulations about life jackets at http://www.boat-ed.com/assets/pdf/handbook/ga_handbook_entire.pdf
- Boats with enclosed areas that may trap gas or vapors are required to be equipped with a USCG approved fire extinguisher.
- Carry your current license and boat registration with you.
- Check your boat's trailer and navigation lights, and fuel before leaving home.
- Carry a first aid kit, insect repellent, sunscreen, extra clothing, food and drinking water.
- Be aware of and abide by all fishing regulations.
- Tell someone where you are going and when you expect to return.

BE AN ETHICAL ANGLER!

Ethical anglers fish responsibly, consider the rights of others, portray a positive image, and help to protect and conserve our natural resources. Be an ethical angler, the future depends on it.

Ethical Anglers:

- # Know and obey the fishing regulations.
- # Keep only the fish they can use and release all others.
- # Pass on the tradition by taking a child fishing.
- # Leave a place cleaner than it was found.
- # Do not transfer fish or plants between bodies of water.
- # Report violations and pollution.
- # Do not litter!
- # Dispose of fishing line properly.
- # Do not trespass.
- # Are courteous of others.
- # Lend a helping hand.

Major Fish Species and Fishing Tips

- Largemouth bass
- Bluegill
- Channel catfish
- Crappie
- Redear sunfish (shellcracker)

The standing timber left in the lake during construction concentrates both crappie and bass for anglers. Crappie will utilize the shade that the timber provides as cover during the daytime. Fishing minnows or jigs to these suspended fish is a good technique. Bass will suspend in the thicker cover as they lay in ambush for passing prey. Early in the morning, top-water baits fished around the edges of the thicker brush may fool hungry bass. Later in the day, fishing swimming lures around the edges of the thicker timber or pitching weedless baits right into the thick cover can be productive.

Bluegill and shellcrackers (bream) like to spawn over sandy areas with good hard bottoms. The old submerged haul road that lies just underwater and runs along shore from the boat ramp down to the east end of the dam is excellent spawning habitat. Just up-lake of the dam on the west side, a large sandy flat with scattered cypress trees is another prime bedding location. Try fishing crickets or earthworms just at or on the bottom in these areas during the late spring and summer for these spawning fish. When the bluegill aren't bedding, try casting small artificial lures, spinners and top-water poppers around the shallow edges.

The aeration system creates a current in the lake that also tends to concentrate game fish. Points and high spots underwater that concentrate current flow will also be ambush points for game fish. The narrow break in the old pond dam just down lake of the upper fishing pier is a good example. Underwater features and cover in the general vicinity of the aeration heads themselves also are likely locations where bass and other game fish will be found. Crankbaits or worms fished in these type areas when the aeration system is operational will be productive.

Hours: Open year-round, 7 days/week, sunrise to sunset.

Regulations

Public fishing areas have special regulations that are posted on site as well as published in the Georgia Sport Fishing Regulations.

Anglers 16 years of age and older, except honorary license holders, must possess a current fishing license and a wildlife management area (WMA) license to fish. An angler possessing a 3-day fishing/hunting, sportsman's or lifetime license is not required to possess a WMA license. For more information, visit

www.gofishgeorgia.com or call the phone number listed at the bottom of the page.

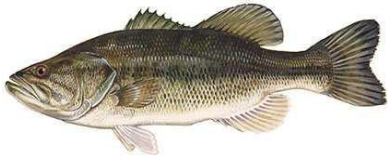
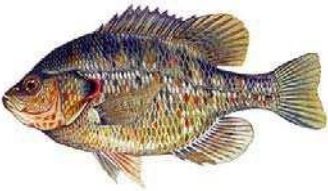
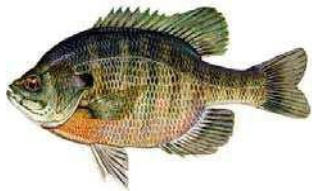
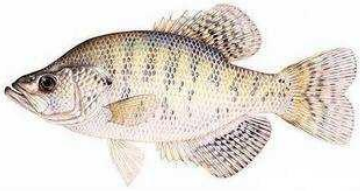

LARGEMOUTH BASS – CATCH AND RELEASE ONLY!

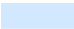

Directions

From Hawkinsville: Take Hwy. 341 towards Eastman, turn left on Hwy. 26 towards Cochran. Travel approx. 0.25 miles and turn left on Upper River Rd. Go about six miles, turn left onto Allison's Landing Rd. then turn right into the PFA at the sign.

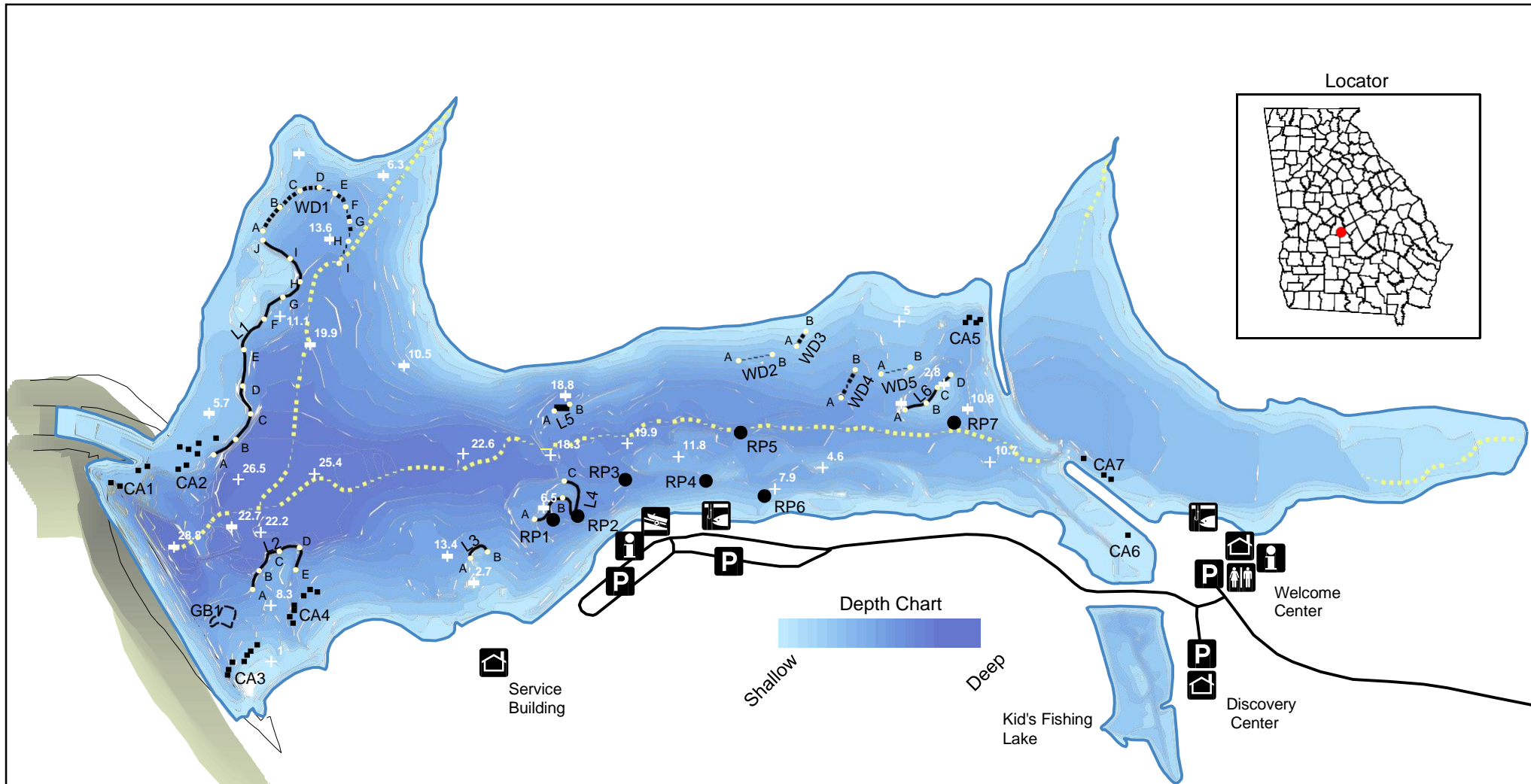
From Cochran: Take Hwy. Alt. 129 North Turn left onto Porter Rd. Travel about eight miles and turn right onto Allison's Landing Rd. then turn right into the PFA at the sign.

For more fishing information, visit the Georgia Wildlife Resources Division Web site at www.gofishgeorgia.com or call (478) 825-6151. T.I.P (Turn in Poachers): To report game/fish law violations, fish kills or hazardous spills, call (800) 241-4113

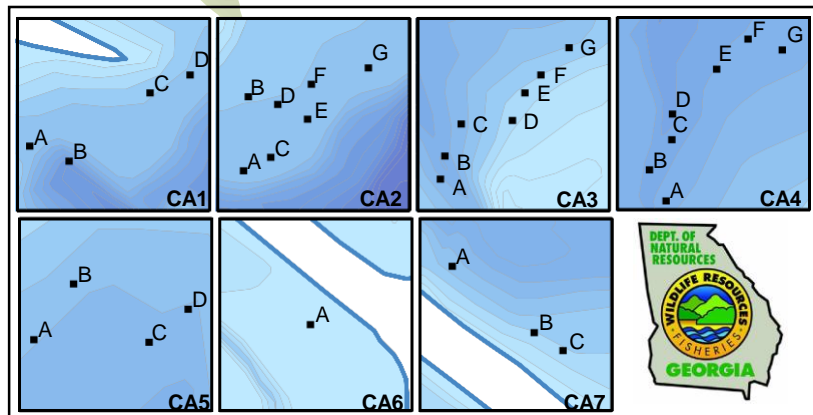
Fish Species	Facts	Best Fishing Times
	<p>Bass spawn from February to May. Occupy a variety of habitats in reservoirs and rivers. Feed both day and night motivated by hunger or striking. Females are typically larger and more aggressive than males.</p> <p>Bait: Crankbaits, plastic worms, & jigs</p>	
	<p>“Shellcracker” feed primarily on aquatic insects including midge larvae to snails. Unlike bluegill, shellcracker typically do not stunt. Fast growth, larger size and good flavor make these a desirable fish.</p> <p>Bait: Crickets, Red Wigglers, & small top water lures</p>	
	<p>Most likely the first fish caught by children. They aggressively guard nest during spawns. Bluegill are hard fighters, hit a variety of baits, and are abundant in most rivers and lakes. Known as a tasty pinfish.</p> <p>Bait: Crickets, Red Wigglers, & small top water lures</p>	
	<p>Closely related to Black crappie. Prefer areas of submerged brush or other structures. Average life span is approximately 10 years. Typically grow larger than Black crappie. Are considered a tasty pinfish making them highly desirable by anglers.</p> <p>Bait: Jigs, Red Wigglers, & minnows</p>	
	<p>Channel catfish are a highly adaptable and desirable fish that are easily caught. They can reach sizes up to 20 lbs and use their barbells for taste. Larger individuals are often confused with Blue catfish.</p> <p>Bait: Chicken livers, worms, “stink bait,” & crickets</p>	

Best Fishing Times Key: Fair  Good  Excellent 

Fish Images: Duane Raver/USFWS



Crate Attractor Waypoint Inset

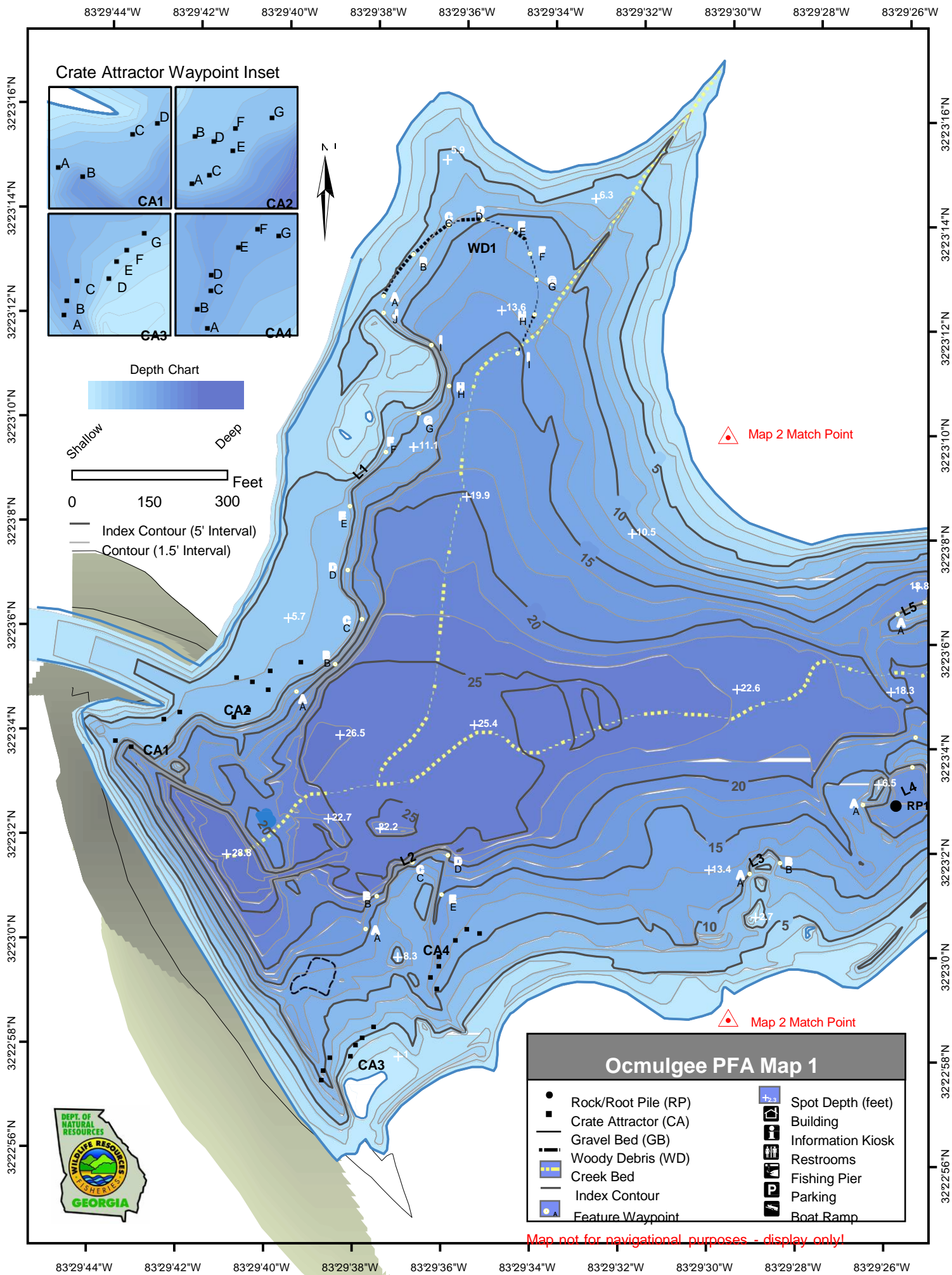


Ocmulgee Public Fishing Area

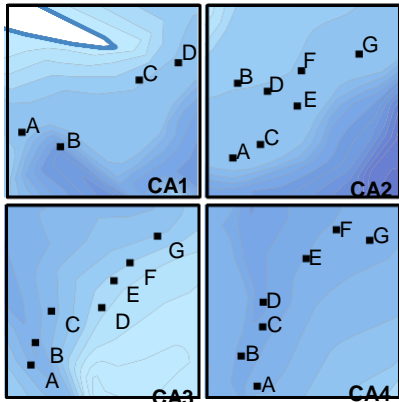
- Rock/Root Pile (RP)
- Crate Attractor (CA)
- Ledge (L)
- Gravel Bed (GB)
- Woody Debris (WD)
- Creek Bed
- ⬢ Feature Waypoint
- +^{2.3} Spot Depth (feet)
- 🏠 Building
- ℹ Information Kiosk
- 🚻 Restrooms
- 🎣 Fishing Pier
- P Parking
- 🚤 Boat Ramp



Map not for navigational purposes - display only!



Crate Attractor Waypoint Inset



Depth Chart



Shallow Deep

0 150 300 Feet

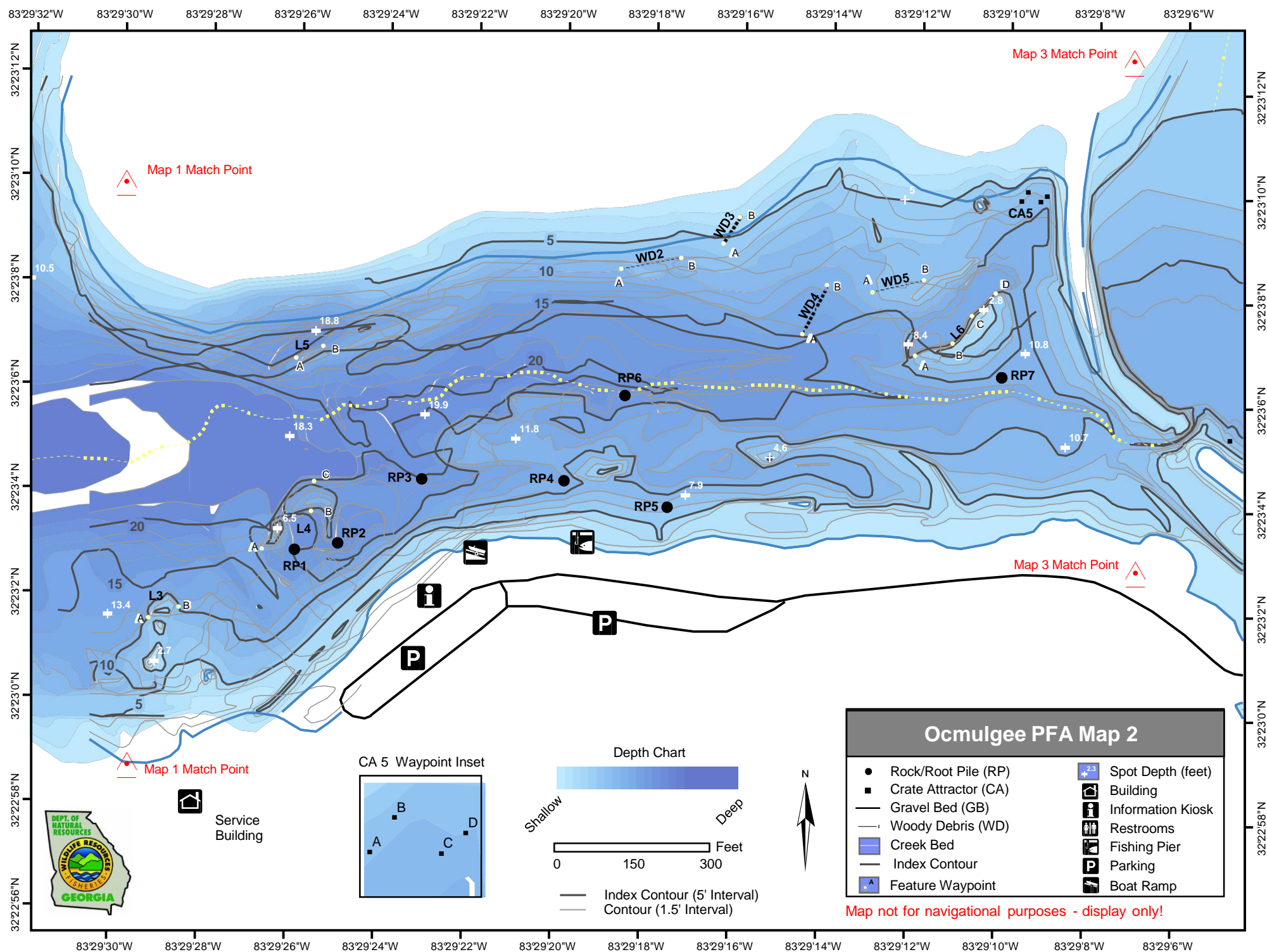
— Index Contour (5' Interval)
— Contour (1.5' Interval)

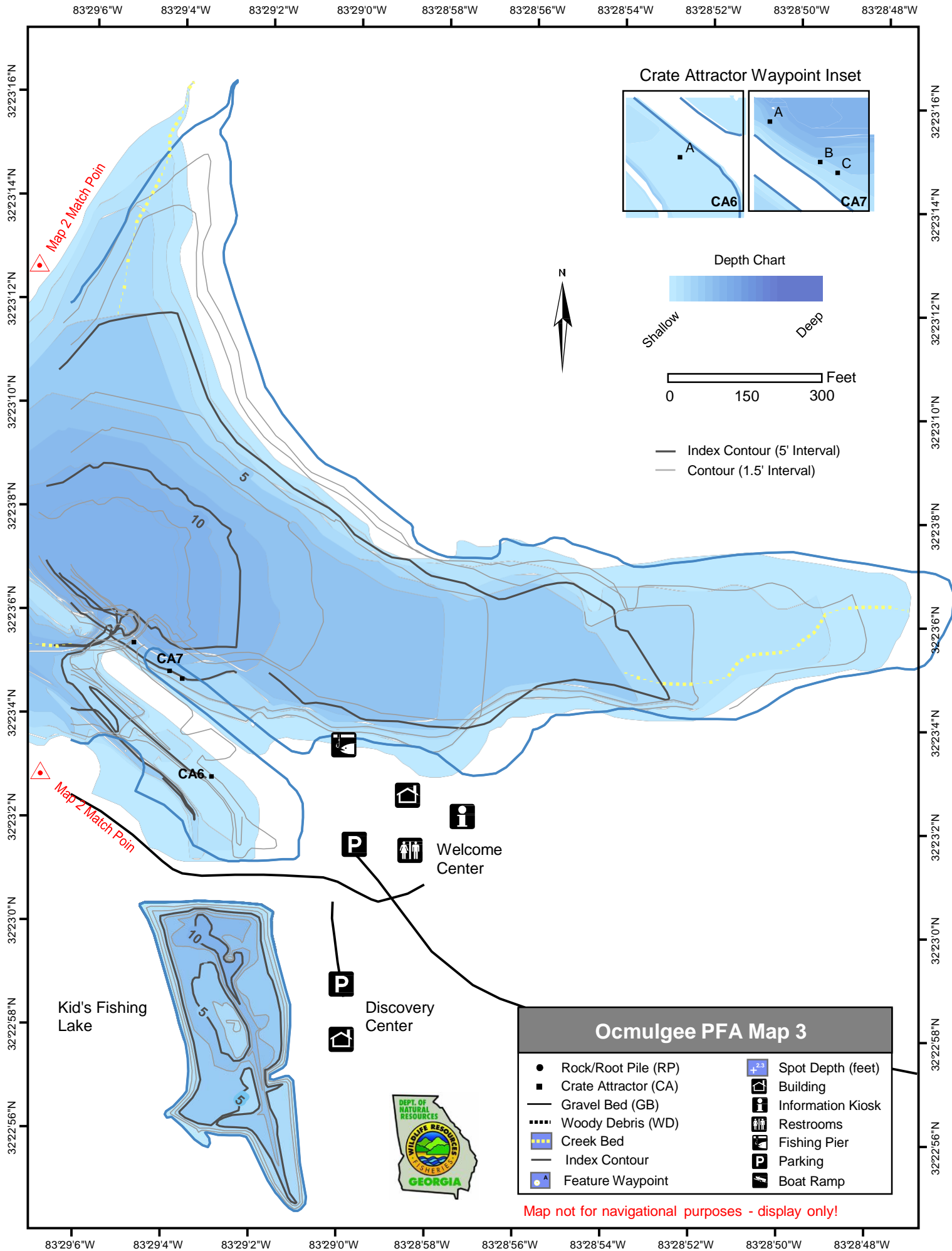


Ocmulgee PFA Map 1

- | | |
|------------------------|------------------------|
| ● Rock/Root Pile (RP) | ±2.2 Spot Depth (feet) |
| ■ Crate Attractor (CA) | Building |
| ▬ Gravel Bed (GB) | Information Kiosk |
| ▬ Woody Debris (WD) | Restrooms |
| ▬ Creek Bed | Fishing Pier |
| ▬ Index Contour | Parking |
| ● Feature Waypoint | Boat Ramp |

Map not for navigational purposes - display only





Ocmulgee PFA Map 3

● Rock/Root Pile (RP)	Spot Depth (feet)
■ Crate Attractor (CA)	Building
— Gravel Bed (GB)	Information Kiosk
..... Woody Debris (WD)	Restrooms
▬ Creek Bed	Fishing Pier
— Index Contour	Parking
● Feature Waypoint	Boat Ramp

Map not for navigational purposes - display only!

Ocmulgee PFA Fish Attractor Waypoints

Waypoints for woody debris

Feature	Point	Longitude	Latitude
WD1	A	-83.49383	32.38679
WD1	B	-83.49364	32.38701
WD1	C	-83.49343	32.38717
WD1	D	-83.49322	32.38721
WD1	E	-83.49304	32.38716
WD1	F	-83.49292	32.38703
WD1	G	-83.49287	32.38689
WD1	H	-83.49288	32.38671
WD1	I	-83.49298	32.38650

Feature	Point	Longitude	Latitude
WD2	A	-83.48853	32.38567
WD2	B	-83.48816	32.38574
WD3	A	-83.48789	32.38582
WD3	B	-83.48780	32.38596
WD4	A	-83.48739	32.38535
WD4	B	-83.48724	32.38561
WD5	A	-83.48695	32.38558
WD5	B	-83.48663	32.38565

Waypoints for ledge features

Feature	Point	Longitude	Latitude
L1	A	-83.49431	32.38467
L1	B	-83.49408	32.38482
L1	C	-83.49391	32.38507
L1	D	-83.49401	32.38533
L1	E	-83.49401	32.38567
L1	F	-83.49379	32.38596
L1	G	-83.49359	32.38617
L1	H	-83.49340	32.38632
L1	I	-83.49352	32.38653
L1	J	-83.49382	32.38670
L2	A	-83.49385	32.38342
L2	B	-83.49378	32.38360
L2	C	-83.49356	32.38378

Feature	Point	Longitude	Latitude
L2	D	-83.49334	32.38382
L2	E	-83.49338	32.38361
L3	A	-83.49145	32.38376
L3	B	-83.49126	32.38382
L4	A	-83.49075	32.38414
L4	B	-83.49044	32.38435
L4	C	-83.49043	32.38451
L5	A	-83.49056	32.38516
L5	B	-83.49039	32.38523
L6	A	-83.48668	32.38525
L6	B	-83.48644	32.38532
L6	C	-83.48633	32.38547
L6	D	-83.48618	32.38559

Waypoints for crate attractors

Feature	Point	Longitude	Latitude
CA1	A	-83.49544	32.38439
CA1	B	-83.49534	32.38436
CA1	C	-83.49514	32.38451
CA1	D	-83.49504	32.38455
CA2	A	-83.49470	32.38453
CA2	C	-83.49461	32.38457
CA2	B	-83.49469	32.38474
CA2	D	-83.49459	32.38472
CA2	E	-83.49449	32.38468
CA2	F	-83.49448	32.38478
CA2	G	-83.49429	32.38483
CA3	A	-83.49410	32.38261
CA3	B	-83.49409	32.38266
CA3	C	-83.49405	32.38273
CA3	D	-83.49392	32.38274
CA3	E	-83.49389	32.38280
CA3	F	-83.49385	32.38284

Feature	Point	Longitude	Latitude
CA3	G	-83.49378	32.38290
CA4	A	-83.49339	32.38311
CA4	B	-83.49343	32.38317
CA4	C	-83.49338	32.38323
CA4	D	-83.49338	32.38328
CA4	E	-83.49328	32.38337
CA4	F	-83.49321	32.38343
CA4	G	-83.49313	32.38341
CA5	A	-83.48603	32.38608
CA5	B	-83.48599	32.38613
CA5	D	-83.48587	32.38611
CA5	C	-83.48591	32.38608
CA6	A	-83.48418	32.38412
CA7	C	-83.48438	32.38464
CA7	B	-83.48446	32.38468
CA7	A	-83.48469	32.38483

*Note: All crate points are clustered (e.g. CA1) with individual points labeled from west to east (left to right) within a cluster. See crate attractor inset maps for examples.

Waypoints for rock/root piles and gravel bed

Feature		Longitude	Latitude
RP1		-83.49054	32.38414
RP2		-83.49027	32.38418
RP3		-83.48975	32.38453
RP4		-83.48886	32.38454

Feature		Longitude	Latitude
RP5		-83.48849	32.38500
RP6		-83.48821	32.38441
RP7		-83.48613	32.38514
GB1		-83.49429	32.38307

All waypoints are in geographic coordinates (decimal degree) and cast on the North American Datum of 1983.